

A wide-angle photograph of a large-scale open-pit mining operation. The scene is dominated by steep, layered rock walls of the mine pit. In the foreground and middle ground, several pieces of heavy machinery are visible, including yellow excavators, orange haul trucks, and a drilling rig. A network of white lines with glowing nodes is superimposed over the top of the image, suggesting a digital or IoT network. The overall color palette is a mix of earthy browns and greys from the rock, and the bright yellow and orange of the machinery.

KEEP MINING KEEP MOVING

Industrial Communication and Computing
Solutions for Mining Digitalization

MOXA

The mining industry is at yet another crossroads in its hundreds of years of history. To stay profitable amidst technology changes, the industry is embracing automation, unmanned operations, and decarbonization. At the same time, it must confront a multitude of internal and external challenges.

The Ever-changing Landscape in the Mining Industry

Internal Challenges

Changing terrains-
mining deeper underground,
digging farther into mountains

Changing conditions-
flooding, toxic gases, explosions,
mine collapses

Changing technologies-
automation, remote controlling,
decarbonization

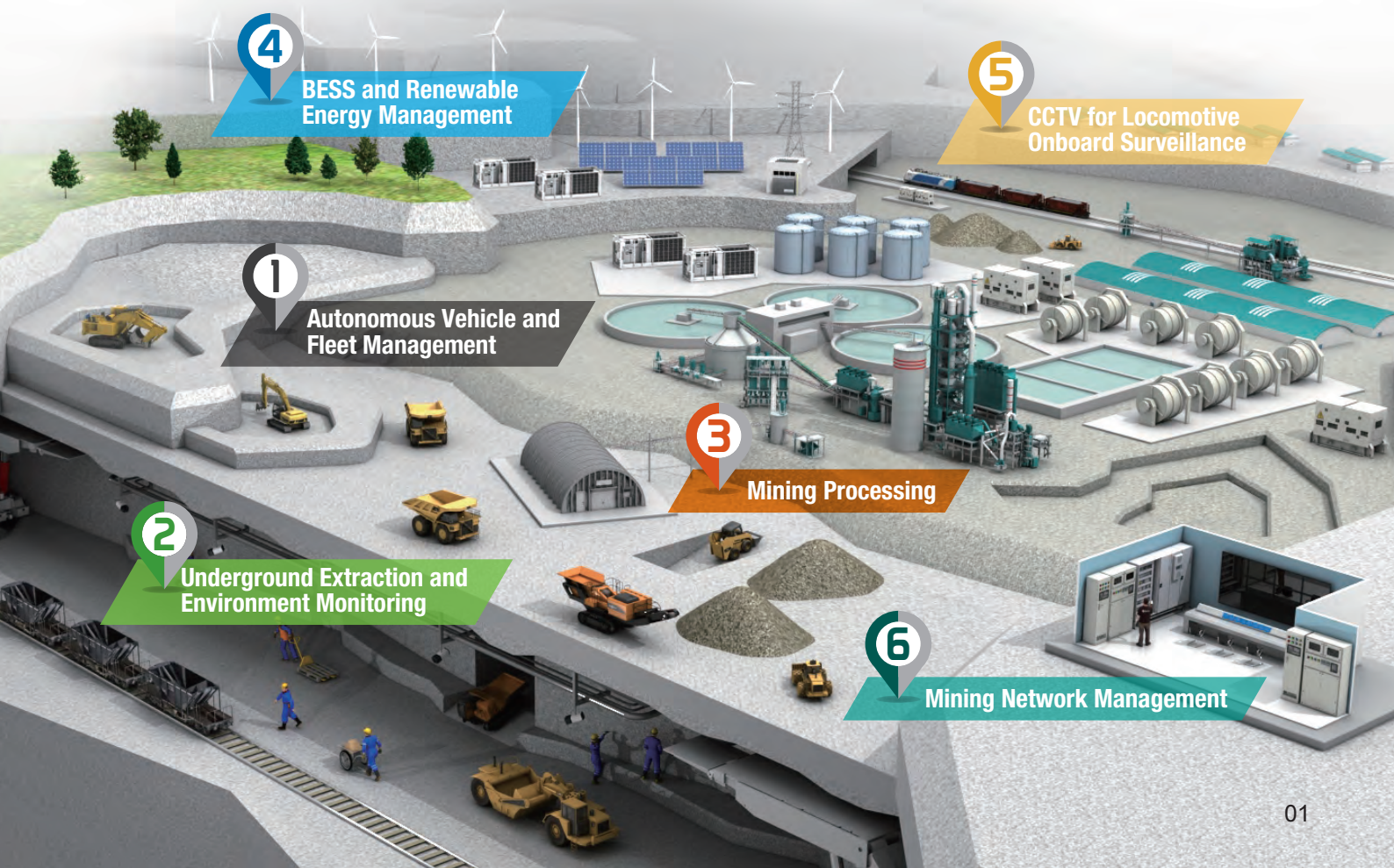
External Challenges

Evolving cyberthreats-
As mining equipment gets
connected, cyberthreats are not
affecting IT only but also OT

Evolving energy diversity-
Embracing net zero calls for renewable
energy and more complex grid
management

Evolving mining commodity selection-
Fast deployment and adjustments to
absorb market fluctuations in mineral
demand

Embrace Changes with Advanced Automation Networks - Let Moxa Help Keep You Moving Forward.



Moxa facilitates agile responses to diverse changes in the mining industry

Be Agile Today:

> Availability

From wired and wireless connectivity to high bandwidth, advanced redundancy, and roaming capabilities for industrial networks

> Visibility

Full visibility of wired and wireless devices from field sites to remote control centers

> Interoperability

Multiple protocols and edge computing fulfill OT/IT data convergence

Be Agile for the Future:

> Cybersecurity

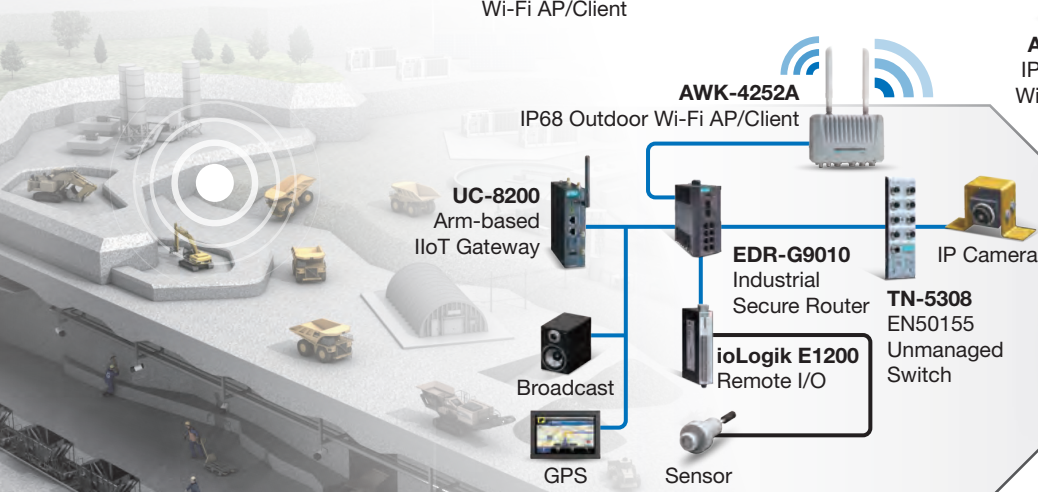
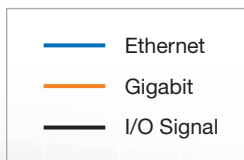
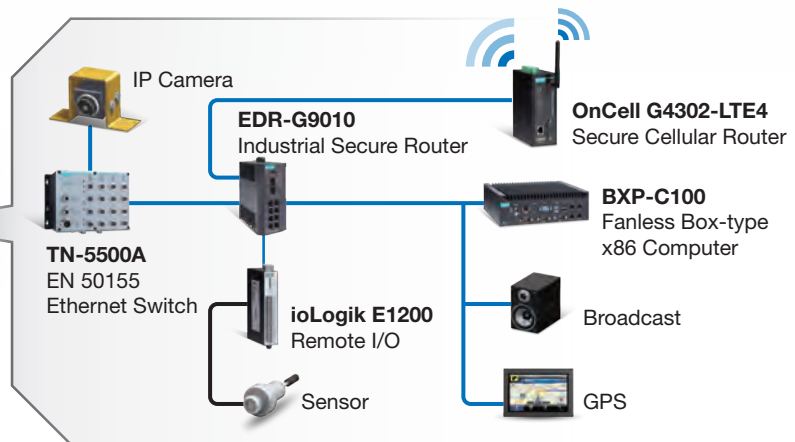
Strengthen cybersecurity in OT networks and comply with IEC 62443 for IT/OT convergence

> Energy Diversity

From renewable energy, energy storage to smart grids and microgrids, we are experts in critical infrastructure, empowering sustainable and hybrid power supply through stable communication

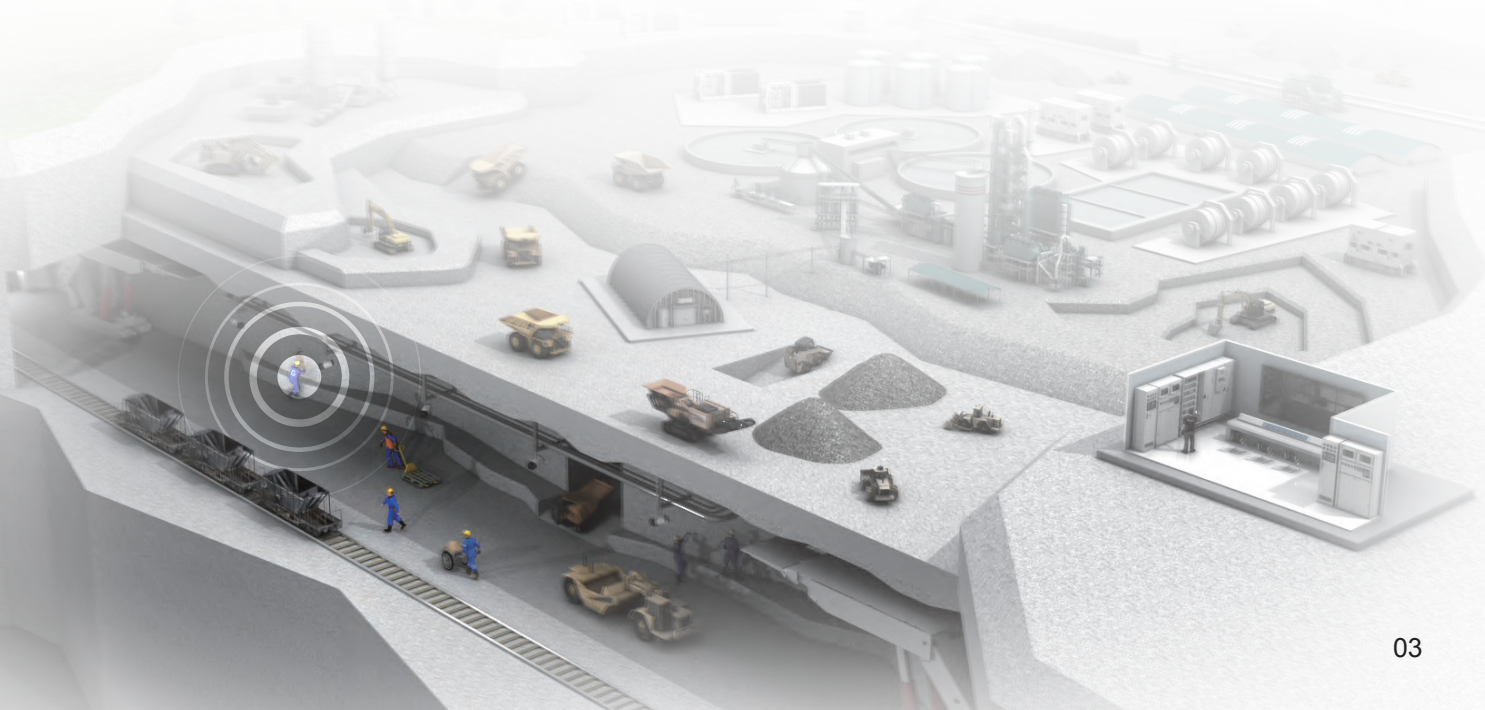
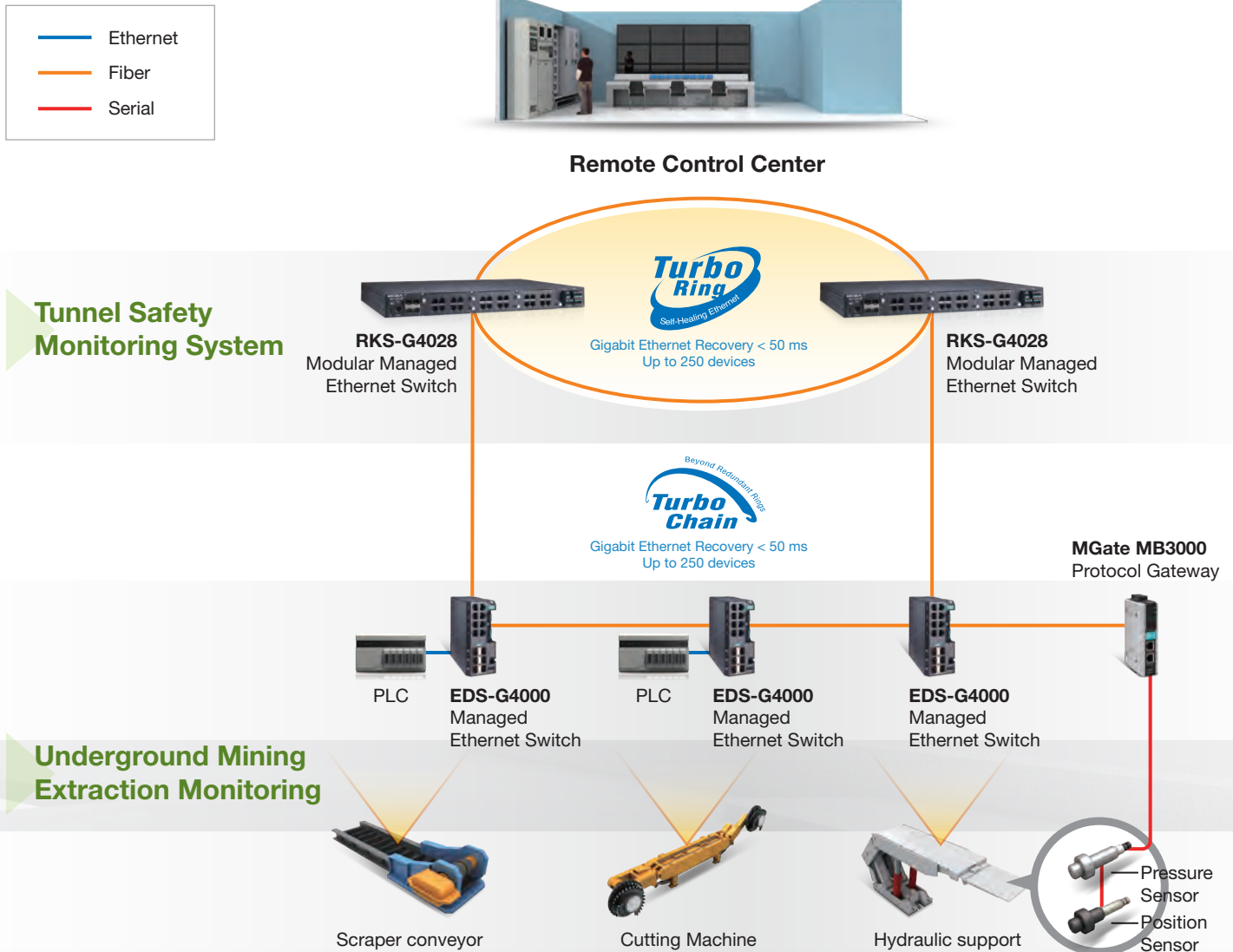


Autonomous Vehicle and Fleet Management



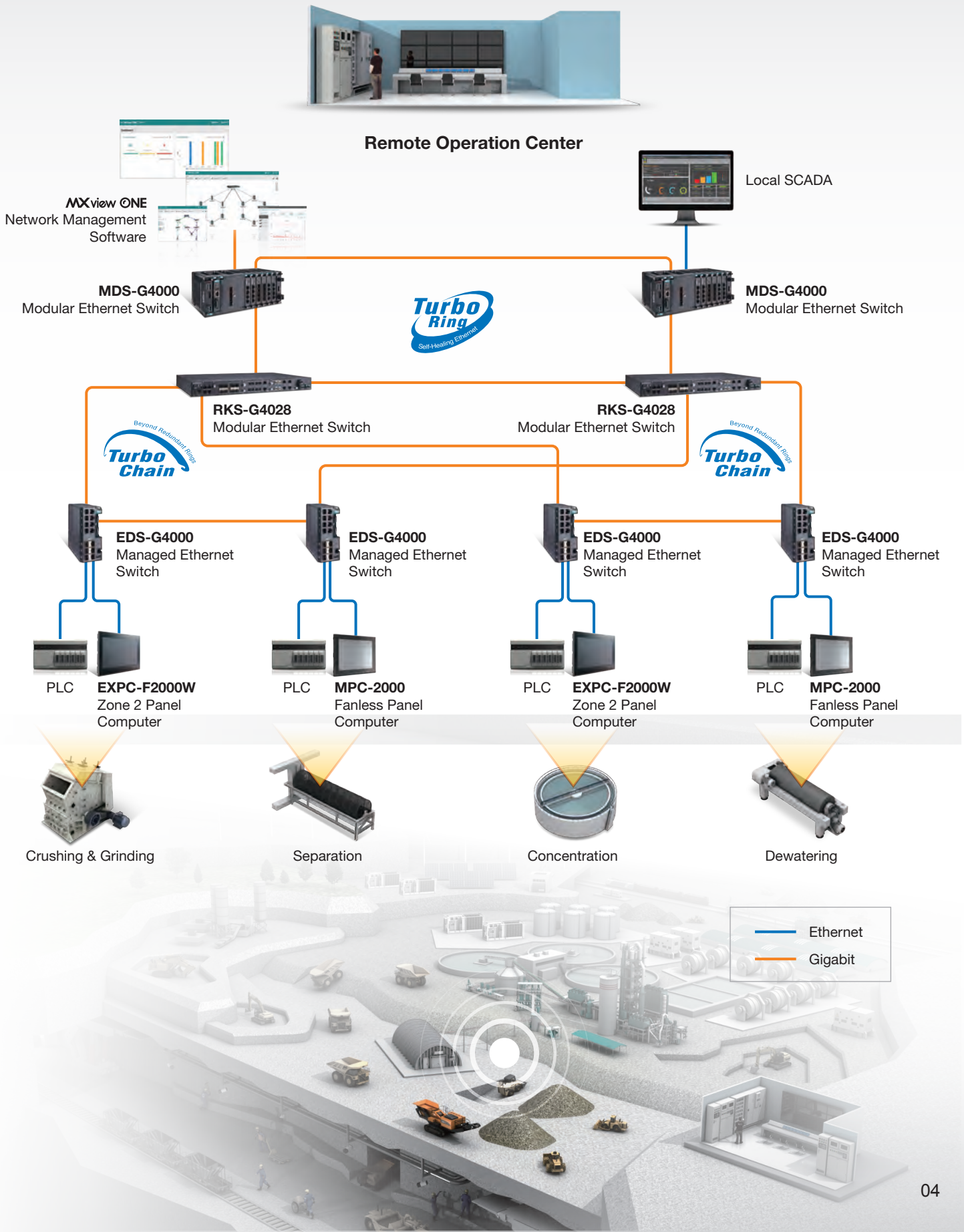


Robust Backbone Network for Underground Extraction and Environment Monitoring





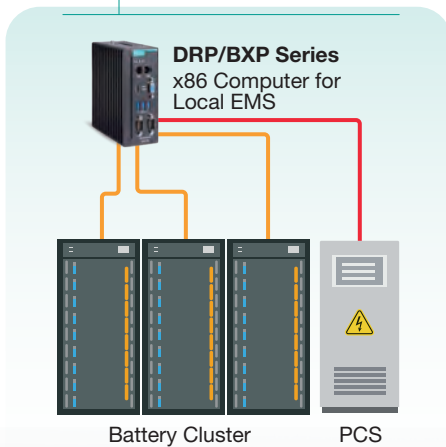
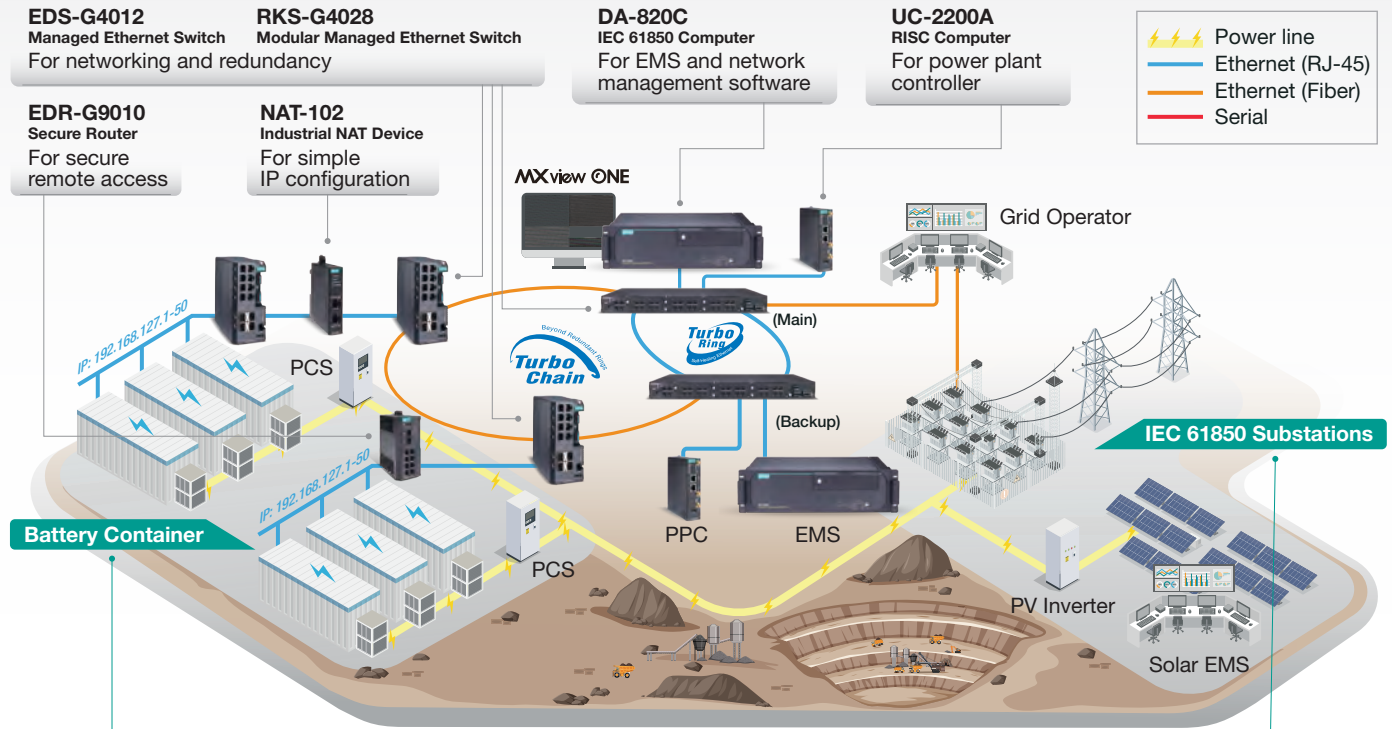
Processing Control System Networks



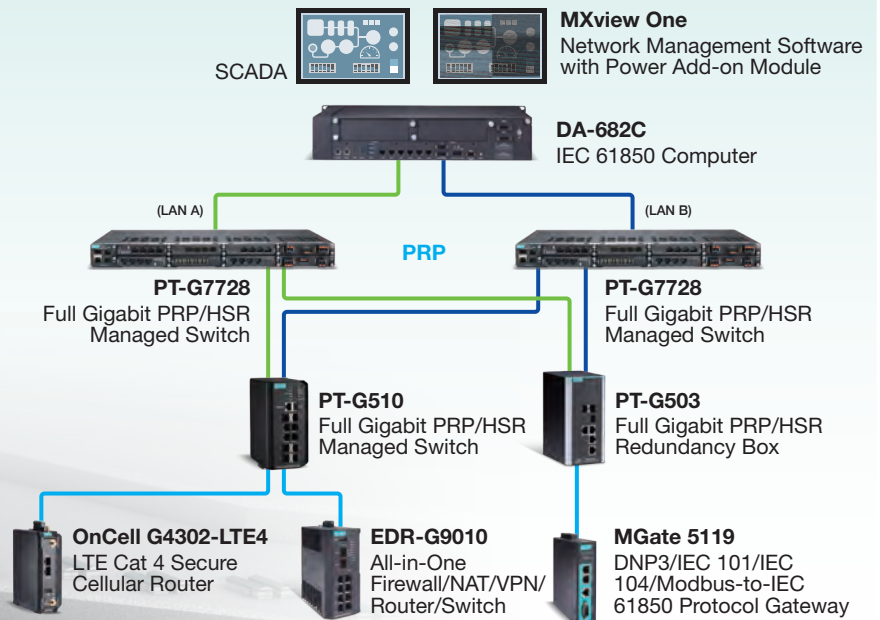


Accelerate Clean Energy Transition With Resilient Communication Networks

Moxa's Solutions for Grid-connected Battery Energy Storage Systems

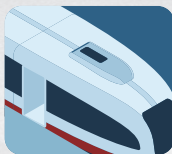


PRP/HSR Networks and IEC 61850 System Visibility for Substation Digitalization





CCTV for Locomotive Onboard Surveillance

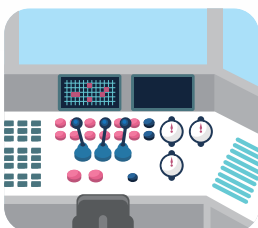


Forward-/Rear-facing Camera

VPort P16-1MP-M12
EN 50155 720P
Rugged IP Camera

Driver Cabin Camera

VPort P16-1MP-M12-IR
EN 50155 720P Infrared
IP Camera



TN-G4500
EN 50155 M12 Gigabit
PoE Switch



MPC-2101/2121
EN 50155 10/12-inch
x86 Panel Computer



V2406C
EN 50155
x86 NVR Computer

— PoE
— Ethernet



6 Mining Network Management

MXview One

Efficient Daily Operation



Network Status At a Glance



Flash Backup and Restore



Timely Notification



OT/IT Convergence Made Easy

MXsecurity

Enhanced Cybersecurity Protection



Firewall



IPS



DPI



VPN



NAT



Visibility on Malicious Activities



Unified Security Policy



Real-time Alert



Centralized Management



Operation Center



Your One-stop Shop: Addressing Diverse Connectivity Needs in One Go

Ethernet Switches/PoE Switches

Support Turbo Ring, Turbo Chain, STP/RSTP/MSTP for network redundancy, and provide PoE/PoE+/PoE++ options



Rackmount/Modular/ Din-rail Switches

RKS-G4028



MDS-G4000

EDS-4000/G4000



EN 50155 Switches

TN Series

IEC 61850 Switches

PT-G7728/G7828

PT-G510



Industrial Computers



Fanless x86 Computers NEW

11th Gen Intel® Core™ Processors

DRP-A100/C100

BXP-A100/C100



RKP-A110/C110



EN 50155 Certified

V2403C/2406C



IEC 61850 Certified

DA-820C/682C/681C



Fanless Panel PC NEW

Zone 2 Certified

MPC-3000

EXPC-F2000W

Industrial Wireless



Private 5G Cellular Gateways NEW

CCG-1500



Cellular Routers NEW

OnCell G4302-LTE4

Outdoor 802.3ac AP/Client

AWK-4252A

Secure Routers



All-in-One Firewall/NAT/VPN/Router/Switch

EDR-G9010



Industrial Network Address Translation (NAT) Devices

NAT-102

Industrial IoT Gateways

4G, MQTT, built-in device SDKs for Azure/AWS cloud, Moxa Industrial Linux 10-year support



Arm-based Computers

UC-5100/8200/2200A

AIG-101/301

Network Management



Network Management Software

MXview One with Power/Wireless Added-on Modules



Network Security Management Software

MXsecurity

Protocol Gateways



MGate MB3000

MGate 5000

Remote I/O



Modular/Standalone

ioThinx 4510

ioLogik E1200

IP Cameras



EN 50155 Certified

VPort Series

Your Trusted Partner in Automation

Moxa is a leading provider of edge connectivity, industrial computing, and network infrastructure solutions for enabling connectivity for the Industrial Internet of Things (IIoT). With over 35 years of industry experience, Moxa has connected more than 102 million devices worldwide and has a distribution and service network that reaches customers in more than 85 countries. Moxa delivers lasting business value by empowering industries with reliable networks and sincere service. Information about Moxa's solutions is available at www.moxa.com.

Moxa Americas USA

Toll Free: 1-888-MOXA-USA
Tel: +1-714-528-6777
Fax: +1-714-528-6778
usa@moxa.com

Brazil

Tel: +55-11-95261-6545
brazil@moxa.com

Moxa Europe

Tel: +49-89-37003-99-0
Fax: +49-89-37003-99-99
europa@moxa.com

Moxa Asia-Pacific and Taiwan

Asia/Taiwan

Tel: +886-2-8919-1230
Fax: +886-2-8522-8623
asia@moxa.com
taiwan@moxa.com

India

Tel: +91-80-4172-9088
Fax: +91-80-4132-1045
india@moxa.com

Korea

Tel: +82-2-6268-4048
Fax: +82-2-6268-4044
korea@moxa.com

Japan

Tel: +81-3-6721-5670
Fax: +81-3-6721-5671
japan@moxa.com

Moxa China Shanghai

Tel: +86-21-5258-9955
Fax: +86-21-5258-5505
china@moxa.com

Beijing

Tel: +86-10-5976-6123/24/25/26
Fax: +86-10-5976-6122
china@moxa.com

Shenzhen

Tel: +86-755-8368-4084/94
Fax: +86-755-8368-4148
china@moxa.com



Book the Moxa Demo Ute for a free live demo of our mining solutions!

www.moxa.com/Demo-Ute ◀

MOXA®

Moxa Inc. Tel: +886-2-8919-1230 www.moxa.com

© 2024 Moxa Inc. All rights reserved.

The MOXA logo is a registered trademark of Moxa Inc. All other logos appearing in this document are the intellectual property of the respective company, product, or organization associated with the logo.